



### Best lifting performance

- High lifting capacity
- High maximum reach capacity

### Best precision and user comfort

- Full hydrostatic transmission for more comfort and productivity
- Best lateral visibility
- Dangerous movements cut out switch

### Compact and strong

- 5 m length
- Tilt corrector as standard



Placing height : 10 m



Maximum lift capacity :  
2990 kg



# HTL 3010



## TELEHANDLER

# Haulotte GROUP

Placing height : 10 m  
Maximum lift capacity : 2990 kg



### PERFORMANCES

Maximum lift capacity	2990 kg
Lift capacity to full height	2000 kg
Lift capacity at full reach	500 kg
Maximum fork height	10 m
Reach at maximum fork height	2.2 m
Maximum forward reach	7.2 m



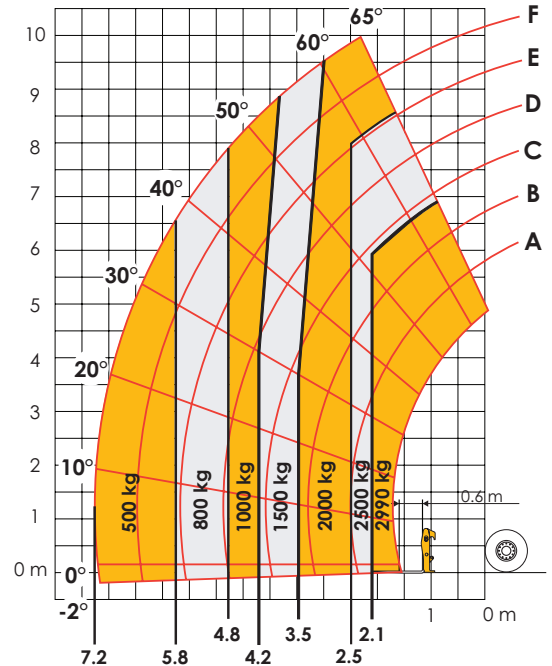
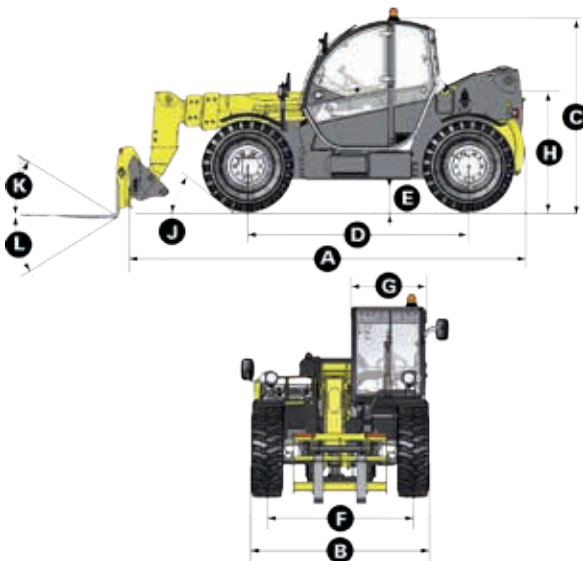
### DIMENSIONS

<b>A</b> Length	4.96 m
<b>B</b> Width	2.26 m
<b>C</b> Height	2.42 m
<b>D</b> Wheelbase	2.78 m
<b>E</b> Ground clearance	42 cm
<b>F</b> Track width	1.88 m
<b>G</b> Cab width	0.96 m
<b>H</b> Height to high boom pivot	1.6 m
<b>J</b> Approach angle	30°
<b>K</b> Upper rotation of forks	18°
<b>L</b> Lower rotation of forks	104°
Turning radius (outside wheels)	3.7 m
Weight with forks	8570 kg
Tyres type	405/70 - 24



### ENGINE

Engine model	Perkins 1104
Engine Capacity	4400 cm3
Engine power output	70 kW / 95 CV
Engine torque	392
Transmission type	Hydrostatic
Fuel tank	120 l
hydraulic oil tank	103 l



### STANDARD EQUIPMENT

- Heavy duty Hydrostatic transmission with variable capacity pump and engine
- 4 wheel drive and steer
- Fuel filter with water separator
- Gear equipment pump
- Simultaneous and proportional controls of all 4 movements of the boom with flow sharing
- Safety valves on hydraulic jacks
- Auxilliary hydraulic ports
- Overload/dangerous movements cut out switch
- Tilt corrector: +/- 10°
- ROPS/FOPS cabin with heating and ventilation

### OPTIONS AND ACCESSORIES

- Cold Weather Package
- Biodegradable oil
- Cold environment oil
- Hot environment oil
- Air conditioning
- Working lights
- 4-in-1 bucket and standards
- Jib attachment and winch
- Electrically hydraulic controls

